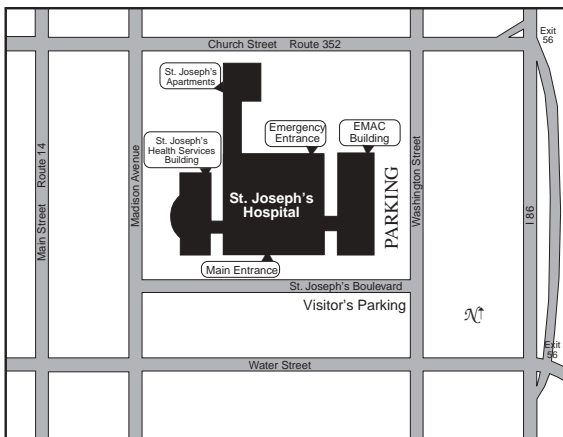

Directions and Map

St. Joseph's is conveniently located in Elmira, NY just off the Southern Tier Expressway (NY Route 17/I-86).

From Route 17/I-86: Take the Elmira exit (Exit 56). Continue straight on Church Street for three blocks to Washington Street. Turn left onto Washington Street for one block. Then turn right on St. Joseph's Boulevard and proceed to the Visitors Parking Lot.



The ImageChecker[®] Technology

*A Powerful Ally in the
Fight Against Breast
Cancer*



Helping You Live a Healthy Life

555 St. Joseph's Boulevard • Elmira, NY 14901

Department of Medical Imaging

Phone: (607) 737-7813

www.stjosephs.org

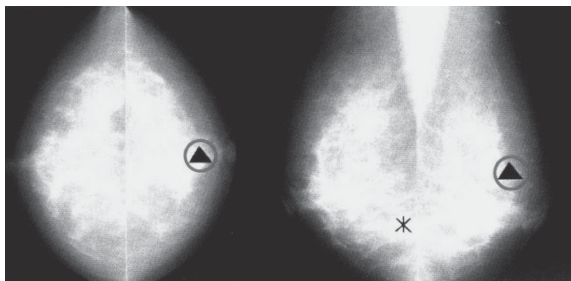


Helping You Live a Healthy Life

555 St. Joseph's Boulevard • Elmira, NY 14901

The ImageChecker® Technology

A Powerful Ally in the Fight Against Breast Cancer



R2 Technology's Role in Early Detection

The ImageChecker® System is a computer-aided detection (CAD) system that digitizes a mammogram and analyzes it using its highly specialized software, which highlights areas on the mammogram which contain features associated with "early" cancer. After a radiologist views the original mammogram conventionally, he or she then reviews the R2-CAD markers displayed on low-resolution video monitors.

The ImageChecker System is like a "Spell-Checker" for medical images. It is designed to assist radiologists in reducing the number of false negative readings by drawing their attention to areas that may warrant a second look.

Thus, the ImageChecker System helps reduce observational oversights and aids radiologists with "early" detection of breast cancers.

Why "R2 it"?

The ImageChecker System is the first FDA approved computer-aided detection system for screening and full-view diagnostic mammograms.

Over 2.5 million (as of March 2002) women have had their mammograms screened using the ImageChecker System.

Early detection of breast cancer is the key to higher survival rates, better prognosis and lower treatment costs.

At St. Joseph's Hospital a patient has the ability to do a self-referral for a mammogram.

The Clinical Challenge

The interpretation of screening mammograms is challenging.

Normal breast tissue varies widely among women and even for the same woman at different times of the month.

The radiologist balances the need for accurate detection of abnormalities with the need to keep the number of unnecessary procedures to a low level.

The use of the R2 ImageChecker is covered by Medicare. Patients should check with their medical insurance companies to be assured of reimbursement.